

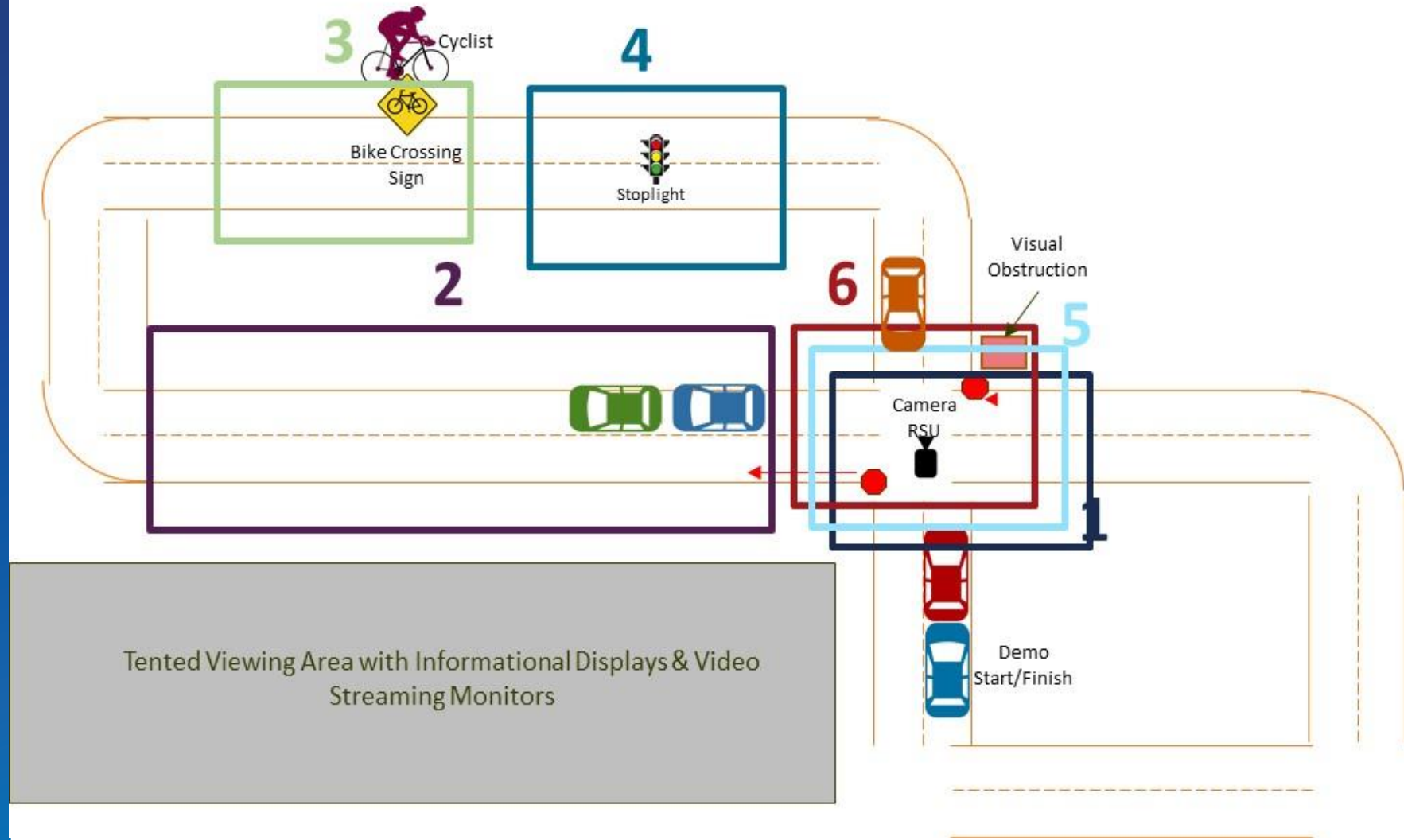


Six C-V2X Demonstrations

26 April 2018

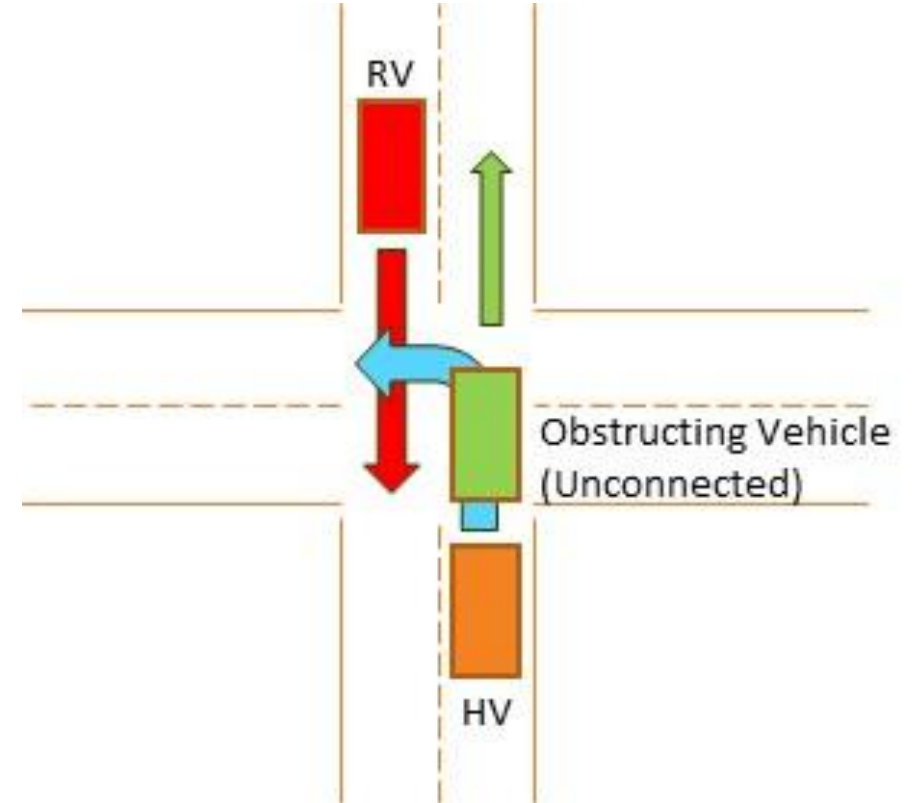
Demonstration Use Cases

1. Left turn assist
2. Emergency electronic brake light
3. Cyclist road crossing alert
4. Traffic signal timing
5. Intersection movement assist
6. Video streaming RSU



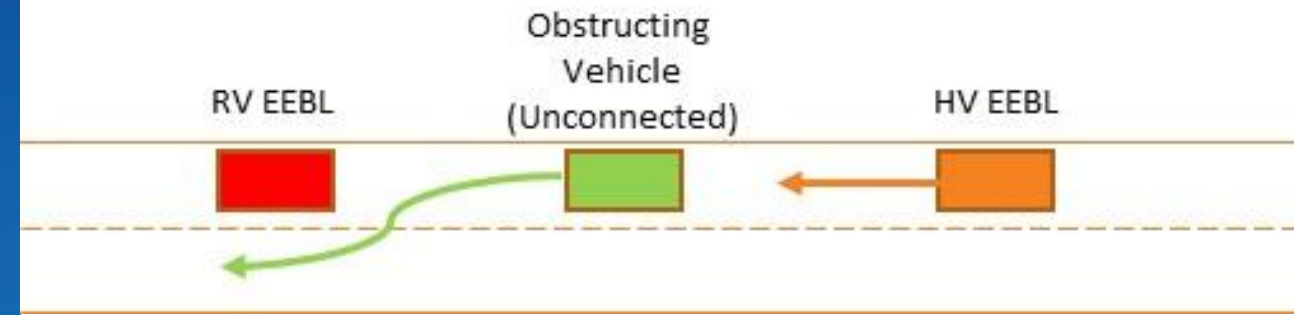
Left Turn Assist

Scenario: HV turning left at intersection with view obstructed by another vehicle, RV goes straight through intersection, triggering left turn assist alert in HV



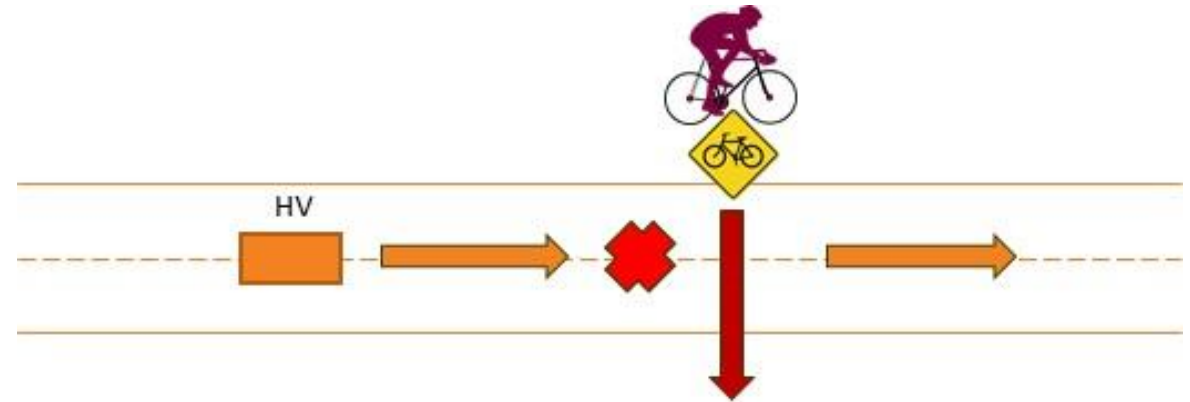
Emergency Electronic Brake Light (EEBL)

Scenario: HV turning left at intersection with view obstructed by another vehicle, RV goes straight through intersection, triggering left turn assist alert in HV



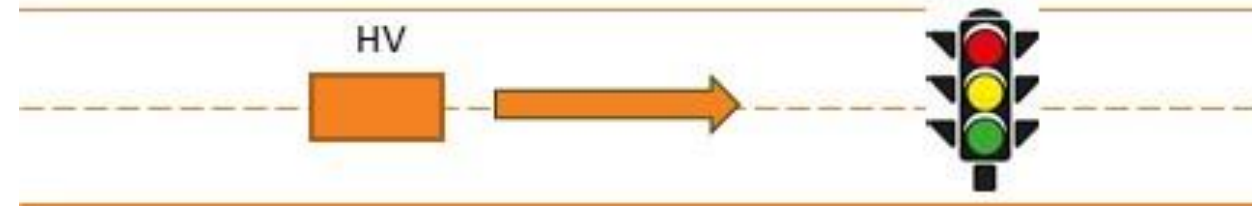
Cyclist Crossing

Scenario: HV gets notification from C-V2X board on a cyclist crossing sign warning of a cyclist crossing the road ahead. Vehicle stops to allow the cyclist to pass before proceeding.



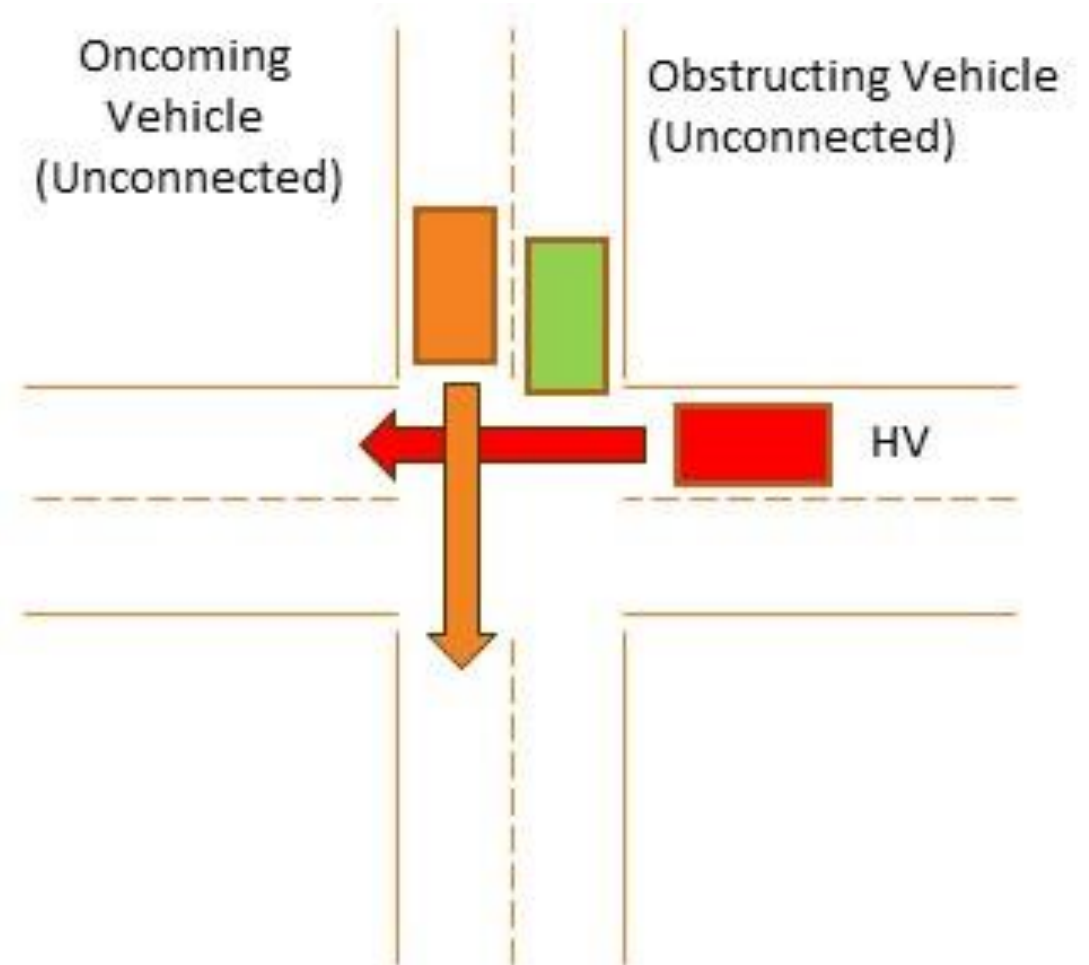
Signal Phase and Timing (SPaT)

Scenario: HV on straightaway, encounters stoplight, sees SPaT timing on HMI



Intersection Movement Assist

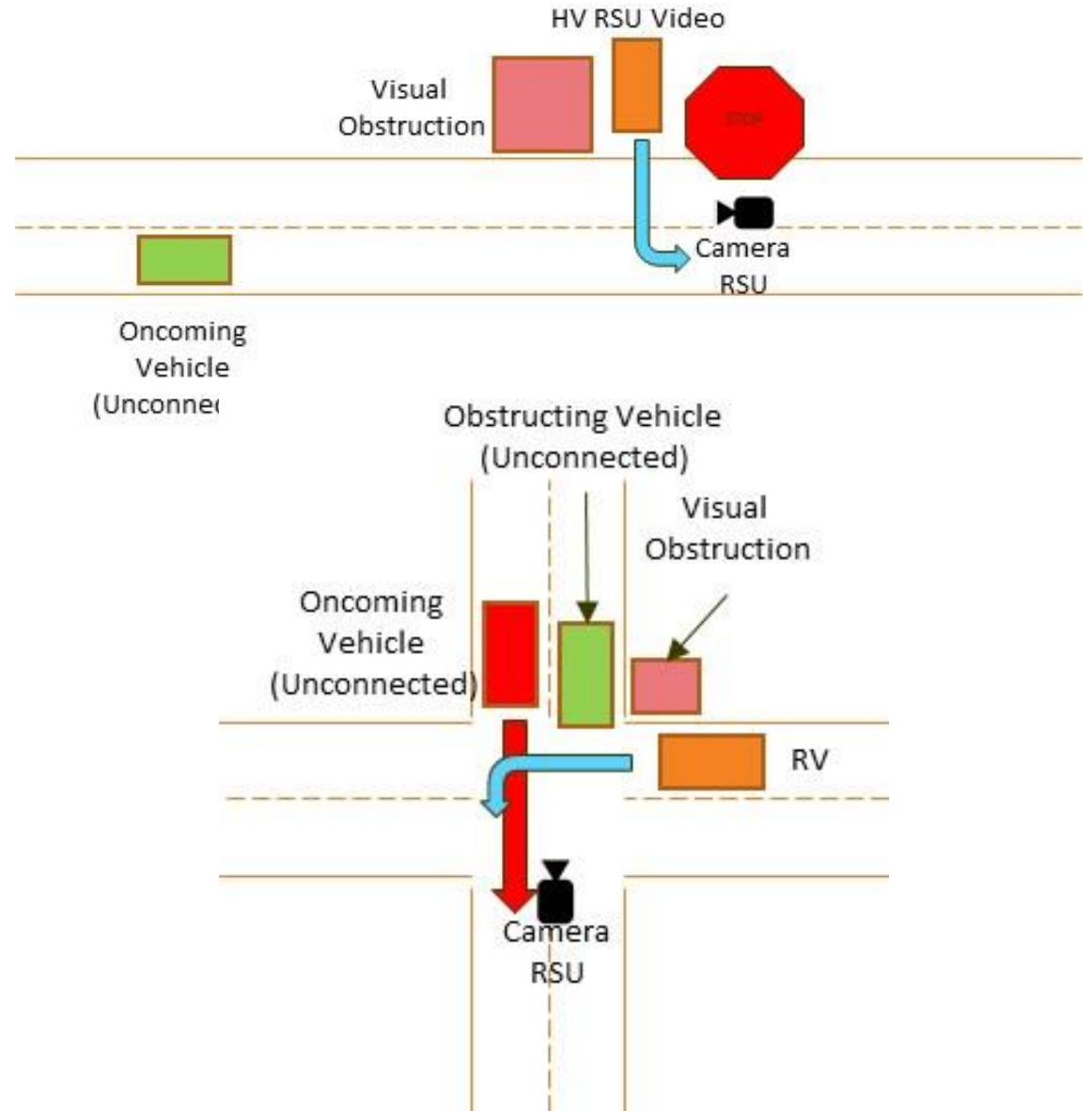
Scenario: HV going straight through intersection, RV crosses directly in front, triggering intersection movement assist alert



RSU Video Layout

Scenario: HV making blind left turn, streams video from camera RSU to see oncoming unconnected vehicle

Scenario: HV making blind left turn, streams video from camera RSU to see oncoming unconnected vehicle. HV allows vehicle to pass before proceeding.





Thank You
for joining the 5GAA C-V2X workshop!